

Local Public Health in Colorado: Partnering to Improve the Health of All Coloradans



Cara Bradbury
Executive Director, CALPHO



Peter Manetta
Manager for Partnerships, CALPHO



Sarah Lampe
Executive Director, Trailhead Institute

What this session will cover:

- Colorado Public Health System
- Roles and Responsibilities
- Current Trends in Public Health
- Colorado Association of Local Public Health Officials



Public Health
Prevent. Promote. Protect.

What is public health?



- Public health...
 - Is a system that promotes the health of a community, while reducing disease, injury, disability, and death
 - Involves *all* of us
 - Often acts as a “convener” or “chief health strategist” to address issues affecting a community’s health
 - Is NOT medical care

Public Health vs Medical Care

Medical Practice Treats an individual's sickness We need medical care some of the time	Public Health Ensures a community's wellness We need public health all the time
Individual Patient	Community
Exam	Surveillance
Diagnosis	Community Assessment
Treatment Plan	Program Planning
Treatment	Program Implementation
Fee/Payment	Budget/Financing
Recall/Patient Evaluation	Program Evaluation

Scope of Governmental Local Public Health

THE “WHAT”

Core Public Health Services in Colorado:

Required by the 2008 Public Health Act for all Local Public Health Agencies (revised in 2019)



1. Communicable Disease Prevention, Investigation, and Control



2. Environmental Public Health



3. Maternal, Child, Adolescent, and Family Health



4. Chronic Disease, Injury Prevention, and Behavioral Health Promotion



5. Assess to and Linkage with Health Care

Scope of Governmental Local Public Health

THE “HOW”

Foundational Public Health Capabilities



1. Assessment and Planning



2. Communications



3. Policy Development and Support



4. Partnerships



5. Organizational Competencies



6. Emergency Preparedness and Response



7. Health Equity and Social Determinants of Health

Scope of Governmental Public Health

- Example:

- Public Health investigates foodborne illnesses in order to stop and prevent the spread of food borne illnesses such as E. Coli or Salmonella. Members of the public and health care providers can report cases to their local agencies for investigation.



Scope of Governmental Public Health

■ Example:

- Tobacco use remains the number one preventable cause of death and disease
- Tobacco education and prevention works to prevent tobacco-related deaths and diseases by:
 - Providing tobacco-free spaces and reducing exposure to secondhand smoke
 - Preventing youth initiation of tobacco products
 - Supporting individuals who want to quit

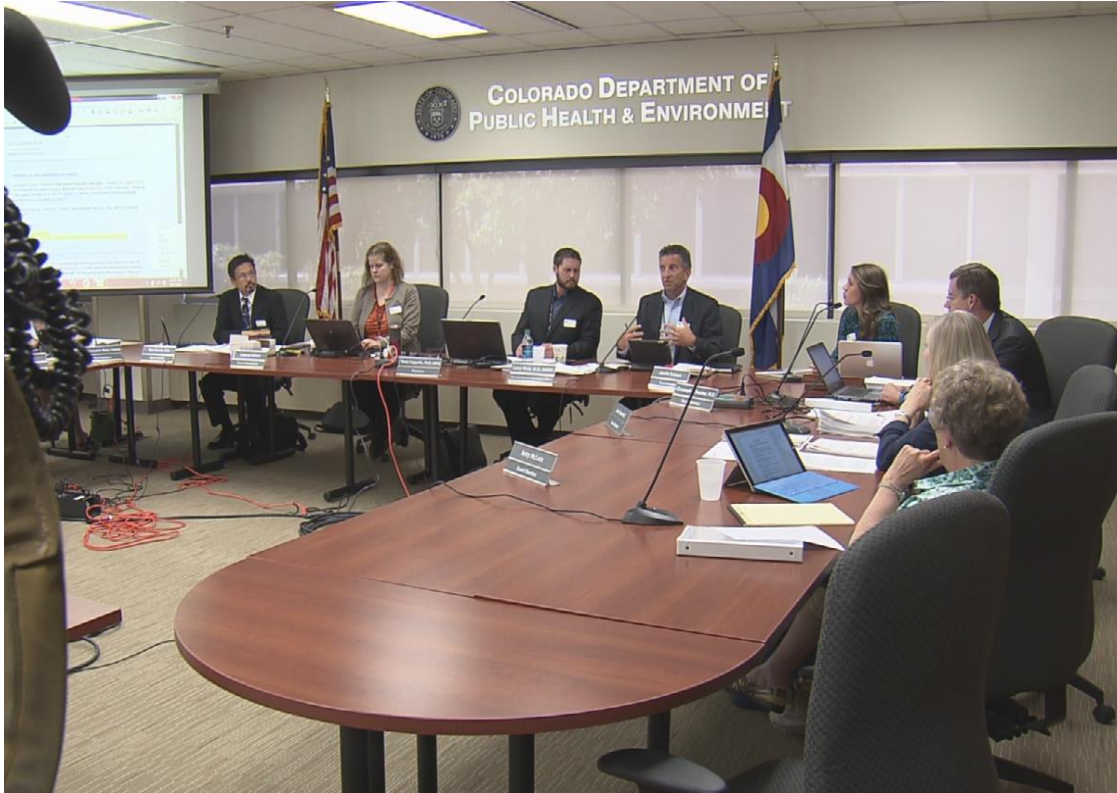


Roles and Responsibilities

The Colorado Public Health Act of 2008, C.R.S. 25-1-501

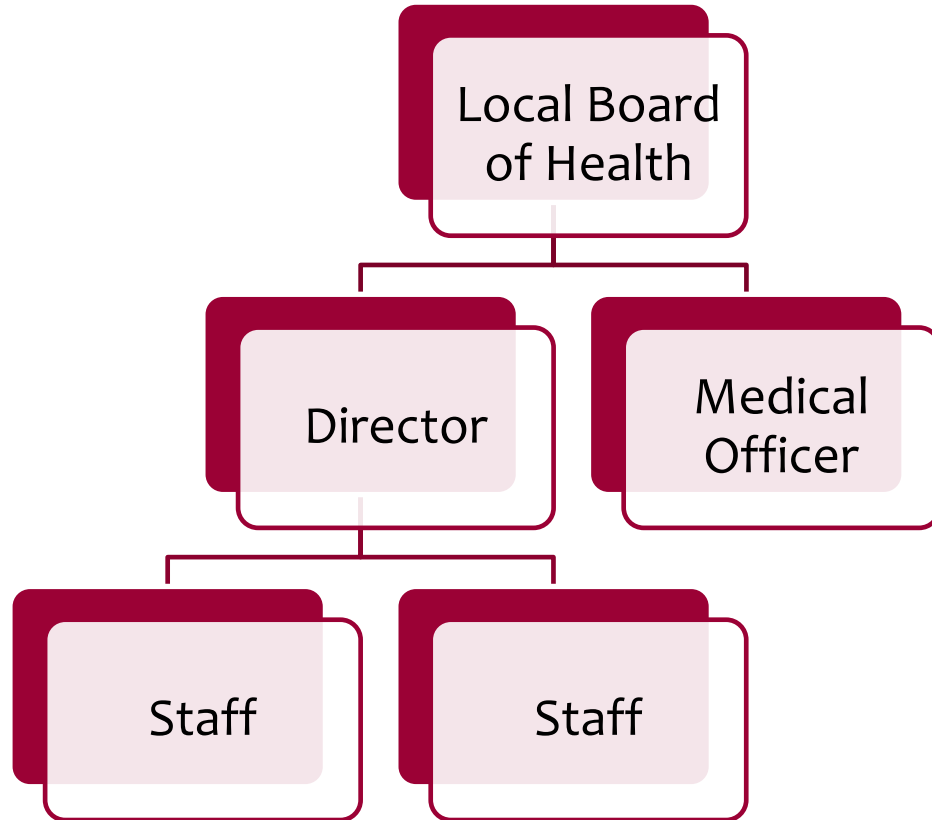
- Established to ensure all people in Colorado receive high-quality public health services which reduces health care costs by preventing injury and disease
- State and local health agencies share the responsibility
- Established 5-year cycles for state and local assessments and public health improvement plans
- Defined the duties and powers of local health agencies and boards of health

State Board of Health



- 9 members
- Appointments made by the Governor
- 4-year term
- 1 member must be a county commissioner
- No more than 5 members can be of the same political party

Local Public Health Structure



- Agency consists of:
 - Local board of health (LBOH)
 - Director (appointed by LBOH)
 - Medical officer (if director is not a physician)
 - Relevant personnel to carry out duties such as Environmental Health Specialist, Public Health Nurse, Health Educator, Epidemiologist, Health Planner

Local Board of Health Powers & Duties

- Select a Public Health Director
- Employ/contract with a medical officer to advise the director, if not a physician
- Hold regular board meetings, hold hearings, take testimony
- Provide, equip, and maintain suitable offices and facilities for the proper administration and provision of Core Public Health Services
- Determine general policies to be followed by public health agency
- Approve 5-year community health improvement plan and submit to the State Board of Health for review
- Issue orders & adopt rules consistent with the laws, rules & orders of the state & the state board, for public or environmental health issues that pose no immediate health threat (e.g. nuisance abatement).
- Assess fees

Sources of Information and Support for LBOH

- Public Health Agency Director
- Public Health Agency Staff
- Other public health agency directors
- Statewide public health director organization (CALPHO)
- CDPHE and other state departments
- National organizations (NaCO, NACCHO, NALBOH)
- Federal government agencies
- Non-profit partners
- Colleges and Universities

Public Health Director Powers & Duties

- Conduct a community health assessment and local/regional public health plan
- Annually estimate the total cost of maintaining the agency for the ensuing year, submit the budget for review and approval
- Direct the resources necessary to carry out the county or district public health plan, based on service priorities from the local board of health
- Issue orders & adopt rules consistent with the laws, rules & orders of the state, & the state board in the event of a public health emergency (e.g., quarantine & isolation, water boil, evacuation, closure of a public place, etc.)

Current Public Health Trends



Workforce

- Recruit, retain, and develop



Data and Information Technology

- Timely and actionable data



Community Engagement & Trust

- Invest in relationship-building

National Landscape



- Bipartisan Policy Center – “Public Health Forward: Modernizing the U.S. Public Health System”
- National Network of Public Health Institutes – “Challenges and Opportunities for Strengthening the US Public Health Infrastructure”
- Trust for America’s Health – “Ready or Not: Protecting the Public’s Health From Diseases, Disasters, and Bio Terrorism”
- And more...

Colorado Association of Local Public Health Officials (CALPHO)

Policy &
Advocacy

Member
Supports

Partnerships
& Projects

Policy and Advocacy

- **Local Public Health Funding:** Policies that provide more flexible state-level funding to LPHAs, as well as provide mechanisms for increased federal funding through state departments.
- **Local Public Health Infrastructure:** Policies that sustain and appropriately increase high quality public health infrastructure including personnel, data systems, and other county and LPHA-based systems.

Partnerships and Projects

- Examples
 - Public Health Workforce Gap and Needs Assessment
 - The Colorado Blueprint for Public Health Workforce Development
 - Public Health Transformation





CO School of Public Health



Rocky Mountain Public Health Training Center

CALPHO

CO Association of
Local Public Health Officials

CDEH

CO Directors of
Environmental Health

COPHAD

CO Public Health
Administrative Directors

Governmental Public Health
CO Dept. of Public Health & Environment
Local Public Health Agencies



Inter-agency partnerships
San Luis Valley Public Health Partnership
West Central Public Health Partnership
Metro Denver Partnership for Health
Eagle, Garfield, & Pitkin partnership

CPHA Sections:

- Professional Education
- Public Health Policy
- Membership
- Emerging Leaders
- Communications
- Health Equity
- Public Health Nursing



CO Public Health Association



Colorado Health Institute



Trailhead Institute

Member Supports



- Facilitate peer-to-peer learning and sharing
- Share information on specific topic areas of interest
- Educate partners about LPHAs and the local public health system
- Convene LPHAs to identify common needs
- Develop state and regional-level relationships that support local needs

What you can do:



Connect with your public health director regarding your Community Health Assessment



Align your public health funding with the needs of your community



Consider how other decisions are connected to the health of your community



Call us anytime. We are here to help!

www.calpho.org

We are here to support you!

- Cara Bradbury, Executive Director
- Colorado Association of Local Public Health Officials (CALPHO)
- cara@calpho.org
- Sarah Lampe
- Trailhead Institute
- slampe@Trailhead.Institute

